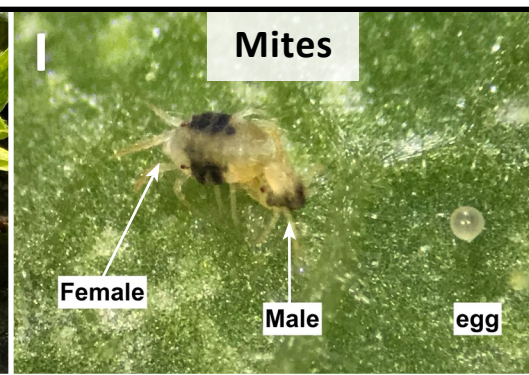
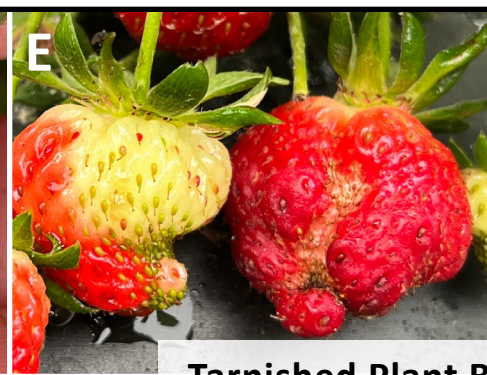
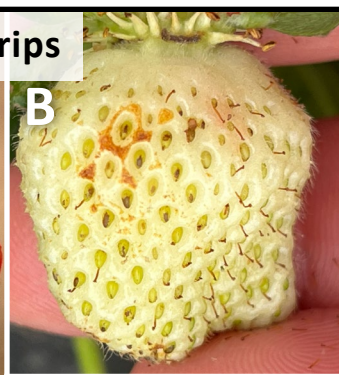
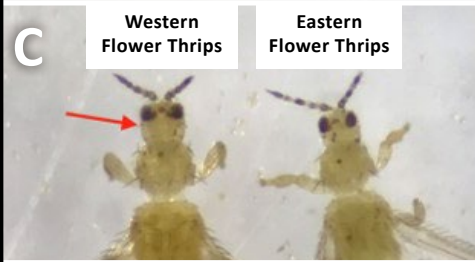


Thrips

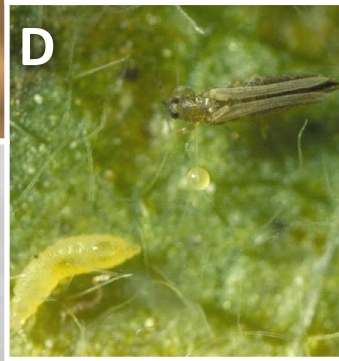


Mites



Western Flower Thrips

Eastern Flower Thrips



Tarnished Plant Bugs



Strawberry Clipper



A Photo Guide to STRAWBERRY ARTHROPOD PESTS IN THE SOUTHEAST



Sap Beetles



Cyclamen Mites



Aphids



Slugs



SWD

COMMON BENEFICIAL OR NON-PEST ARTHROPODS



Photos: Symptoms of plant and fruit injury caused by arthropod pests and damaging, beneficial, and non-pest arthropods. *Note: Most photos are magnified, and some pictured insects or insect life stages are not easily visible without a magnifying device.*

(A–D): Thrips. Injury by thrips to strawberry fruit includes bronzing of red fruit (A) or green, immature fruit (B). Thrips adults are small, slender arthropods with feathery wings. Both immatures (left) and adults (right) (D) damage fruit by feeding on the flesh of fruit between seeds. Identification of western (*Frankliniella occidentalis*) and eastern (*F. tritici*) flower thrips is very difficult in the field (C).

(E–H): Tarnished plant bugs. Injured fruit, caused by plant bug feeding, will be catfaced (E–F) or deformed; deformities generally occur on the bottom half or tip of berries. Plant bug injury can be differentiated from other sources of fruit deformation by the consistency of seed size across the fruit; seeds may vary in size on deformed fruit caused by boron deficiency or cold injury. Both adult (G) and immature plant bugs (H) feed on and destroy developing seeds.

(I–K): Mites. Multiple species of mites can cause leaf injury in strawberry (I). Injury is often visible as stippling (J) with a burned or scorched appearance on leaves; webbing may also be visible in serious infestations (K).

(L–M): Strawberry clippers. Though not often an economically important pest of strawberry, strawberry clippers (L) can sever buds and cause them to die (M).

(N–O): Sap beetles. Chewed and rotting fruit (N) are often the result of feeding by sap beetles (O); sap beetle damage may be confused with damage caused by birds or other wildlife.

(P): Cyclamen mites. Cyclamen mite injury to strawberry presents as stunted, crinkled, and chlorotic leaves (P), which may be confused with glyphosate injury.

(Q): Slugs. Slug injury to strawberry fruit will appear as circular lesions with no discoloration. Slugs are not arthropods, but damage may be confused with that caused by arthropods.

(R): Spotted-wing drosophila (SWD). SWD may be found on fruit produced in the summer and can be identified from the presence of small, white, worm-like larvae (R) feeding on decaying portions of fruit.

(S–T): Aphids. When present in strawberries, aphids are often found on the underside of leaves (S) or near the crown and new leaves (T). Honeydew deposits and sooty mold often develop on plant surfaces when aphids are present, along with general plant chlorosis and stunting.

(U–Z): Beneficials and non-pest arthropods. Other common arthropods found in strawberry include predators, such as minute pirate bugs (adult [U] and immature [V]), lady beetles (larva [W], pupa [X, left], and adult [X, right]), and predatory mites (*Phytoseiulus persimilis*) (Y). Seed bugs, including the long-necked seed bug (Z), are often seen on fruit. Seed bugs are often not considered pests; however, a species that damages fruit has been reported.

Many insects produce similar symptoms on strawberry. Images alone may not be enough to obtain an accurate diagnosis. For more information on the insects pictured, see the [Southeast Regional Strawberry Integrated Pest Management Guide Focused on Plasticulture Production](#) and the [MyIPM app for Fruits and Nuts](#).

Photo credits: (A, B, E, F, Q–T, Z) A. Cato, University of Arkansas; (D) J. T. Reed, Mississippi State University, Bugwood.org; (C, J, K, Y) T. Bilbo, Clemson

University; (G) R. Ottens, University of Georgia, Bugwood.org; (H) University of Georgia, Bugwood.org; (I) E. J. Sikora, Auburn University; (L) University of Georgia Plant Pathology, University of Georgia, Bugwood.org; (M) J. Samtani, Virginia Tech; (N) N. Hummel, LSU AgCenter, Bugwood.org; (O) J. Berger, Bugwood.org; (P) L. Lopez, North Carolina State University; (U) W. Cranshaw, Colorado State University, Bugwood.org; (V) A. Sisson, Iowa State University, Bugwood.org; (W) A. E. Knutson, Texas A&M University, Bugwood.org; (X) S. Ellis, Bugwood.org.

This publication was made possible thanks to funding provided by the Southern Region Small Fruit Consortium. Any opinions or recommendations expressed in this publication do not necessarily reflect the views of the Consortium or its members.

Publication 4074 (1-25)

By **Aaron Cato**, Assistant Professor and Extension Specialist – Horticulture IPM, University of Arkansas System Division of Agriculture; **Rebecca A. Melanson**, Associate Extension Professor, Plant Pathology, Mississippi State University, Central Mississippi Research and Extension Center; **Edward J. Sikora**, Professor and Extension Plant Pathologist, Alabama Cooperative Extension System, Auburn University; and **Mary Helen Ferguson**, Extension Agent – Agriculture and Natural Resources (Horticulture), LSU AgCenter.

Copyright 2025 by Mississippi State University. | Produced by Agricultural Communications. | Mississippi State University is an equal opportunity institution. | Extension Service of Mississippi State University, cooperating with U.S. Department of Agriculture. Published in furtherance of Acts of Congress, May 8 and June 30, 1914. ANGUS L. CATCHOT JR., Director