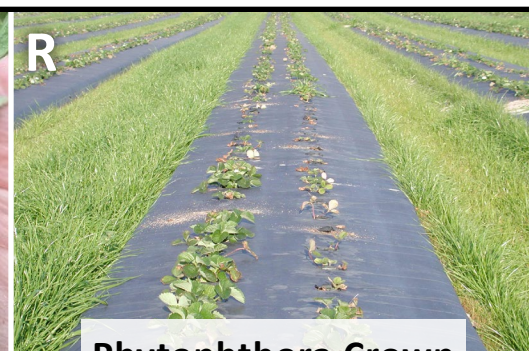




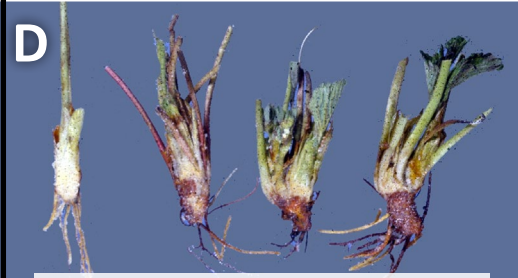
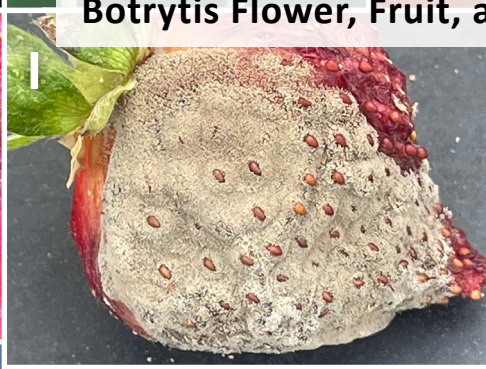
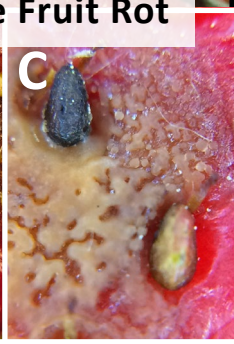
A Anthracnose Fruit Rot



F Botrytis Flower, Fruit, and Crown Rot (Gray Mold)

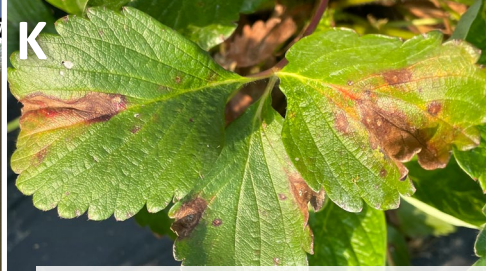


R Phytophthora Crown and Root Rot



D Anthracnose Crown Rot

**A Photo Guide to
STRAWBERRY DISEASES
IN THE SOUTHEAST**



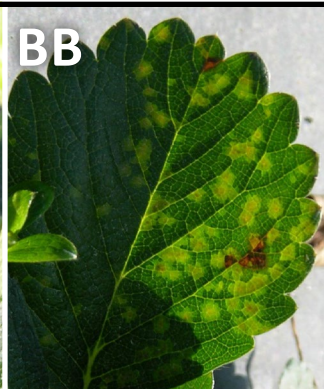
K Neopestalotiopsis Leaf Spot, Fruit Rot, and Crown Rot



U **V** Leather Rot



W Black Root Rot



Common Leaf Spot

Angular Leaf Spot



Strawberry Leaf Scorch



Gnomonia Leaf Spot



Photos: Signs and symptoms of strawberry diseases in the Southeast. *Note: Some photos are magnified, and pictured structures are not easily visible without a magnifying device.*

(A–C): Anthracnose fruit rot. Brown to black, often circular, lesions (A) develop on fruit. When weather conditions are favorable, masses of salmon-colored spores may be produced on infected tissues (B–C).

(D–E): Anthracnose crown rot. Infected plants collapse and die. When crowns are split lengthwise, internal tissues are firm with reddish-brown discoloration and streaking resulting in a marbled appearance (D–E).

(F–J): Botrytis flower, fruit, and crown rot (gray mold). Botrytis can colonize flowers and damaged tissues, appearing as a light brown rot (F). Fruit rot starts as a gray or brown lesion (G) that can expand to cover large areas of the fruit (H). Masses of gray spores develop on infected tissues giving a fuzzy appearance (G–I). Botrytis crown rot develops at the crown of the plant; leaves of infected plants will begin to turn brown and die above the colonized region (J).

(K–Q): Neopetalotriopsis leaf spot, fruit rot, and crown rot. Tan to dark brown spots develop and are irregularly distributed on infected leaves (K–L). Black fruiting bodies become visible within the lesion (M) and exude spores in columns (N). Fruit lesions are initially tan but turn black and may cover much of the fruit (O). Plants with crown rot may be stunted and have reddish-purple leaves (P); wilting often occurs before plant collapse (Q).

(R–T): Phytophthora crown and root rot. Plant collapse (R–S) may occur rapidly or slowly. When infected plants are cut open, a brown discoloration can be seen in the vascular tissue of the crown (T).

(U–V): Leather rot. Infected fruit tissue turns brown and has a leathery texture (U). White mycelia may develop on the surface of infected fruit (V).

(W): Black root rot (BRR). BRR is a disease complex that typically involves multiple pathogens. Diseased roots have poor fibrous structure, are black or have brown lesions, and have a “rat-tail” appearance (right). A healthy root system (left) is shown for comparison.

(X–Z): Common leaf spot. Lesions develop on the upper leaf surface and are deep purple to red and eventually develop tan, gray, or almost white centers with distinct reddish-purple to brown borders.

(AA–CC): Angular leaf spot. Symptoms first appear as water-soaked lesions (AA). Lesions may appear translucent when held to light (BB). Lesions on the upper surface of leaves are often angular and become reddish-brown over time (CC). Bacterial exudate may be present (AA).

(DD–EE): Strawberry leaf scorch. Brown to reddish-purple spots develop on the upper leaf surface.

(FF): Gnomonia leaf spot. Brown to dark purple spots develop on leaves and often merge to form large blotches. In severe infections, affected areas may become necrotic, causing leaves to wither and die.

Note: Many diseases produce similar symptoms. Images alone often cannot be used to obtain an accurate diagnosis. For more information on strawberry diseases, see the [Southeast Regional Strawberry IPM Guide Focused on Plasticulture Production](#) and the [MyIPM app for Fruits and Nuts](#).

Photo credits: (A, E, Z) G. Holmes, Strawberry Center, Cal Poly San Luis Obispo, Bugwood.org; (B, X, Y) B. Kennedy, Univ. Kentucky, Bugwood.org; (C, I, K, L, Q) R. A. Melanson, MSU Extension, Bugwood.org; (D, CC) FL DPI, FL DACS, Bugwood.org; (F) M. Dowling, Clemson Univ., Bugwood.org; (G) S. Bauer, US-DA-ARS, Bugwood.org; (H, O, FF) E. Sikora, Auburn Univ.; (J) F. Louws, NCSU; (M, P) M. H. Ferguson, LSU AgCenter; (N) K. Demchak, Penn State Univ.; (R–V) G. Schnabel, Clemson Univ.; (W) L. Leandro, G. Abad, and F. J. Louws, NCSU; (AA–BB) D. Ferrin, LSU AgCenter, Bugwood.org; (DD–EE) P. Bachi, UK R&E Center, Bugwood.org.

This publication was made possible thanks to funding provided by the Southern Region Small Fruit Consortium. Any opinions or recommendations expressed in this publication do not necessarily reflect the views of the Consortium or its members.

Publication 4067 (1-25)

By **Rebecca A. Melanson**, PhD, Associate Extension Professor, Plant Pathology, Mississippi State University, Central Mississippi Research and Extension Center; **Edward J. Sikora**, Professor and Extension Plant Pathologist, Alabama Cooperative Extension System, Auburn University; **Mary Helen Ferguson**, Extension Agent – Agriculture and Natural Resources (Horticulture), LSU AgCenter; and **Aaron Cato**, Assistant Professor and Extension Specialist – Horticulture IPM, University of Arkansas System Division of Agriculture.

Copyright 2025 by Mississippi State University. | Produced by Agricultural Communications. | Mississippi State University is an equal opportunity institution. | Extension Service of Mississippi State University, cooperating with U.S. Department of Agriculture. Published in furtherance of Acts of Congress, May 8 and June 30, 1914. ANGUS L. CATCHOT JR., Director